

HEB Table Collection



Productsheet — 18112024

+Halle[®]

To sit around a table is to open your mind to those sitting across from you. The HEB tables are where honesty meets industry and makes conviviality. Designed by Danish design-duo, Krøyer-Sætter-Lassen, the tables all feature a cut-to-measure, recycled HEB beam as a base.

The striking interplay between tables' vertical and horizontal elements will help define any work or living space, while their soft lines, bright colours, glossy finish, and elevated yet witty industrial character, ground them in our everyday.

Designed by Krøyer-Sætter-Lassen

When it comes to breathing industrial cleverness into everyday objects, the Copenhagen-based Design duo belongs to a new generation of Danish designers who are not afraid to include resourcefulness into their game. While Emil Krøyer and Mads Sætter-Lassen have spent the last decade incorporating great material solutions, it is through a cross-disciplinary approach, that the duo continues to impress, combining economy with lush cabinetmaking, functional metalware, and thoughtful ergonomics.

HEB Table Collection



HEB 01 Table Ø420 H550



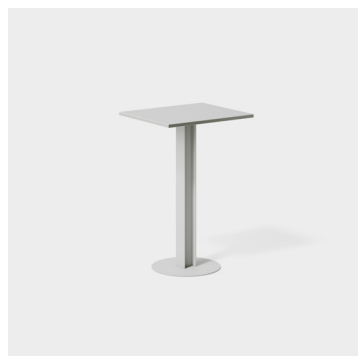
HEB 02 Table Ø700 H730

HEB 02 Table Counter Height
Ø700 x H950HEB 02 Table High
Ø700 x H1050

HEB 03 Table W600x700 x H730



HEB 03 Table W600x700 x H950



HEB 03 Table W600x700 x H1050



HEB 04 Table Ø900 x H300



HEB 05 Table Ø1700 x H730



HEB 06 Table Ø1200 x H730

Materials

Table top / edge band:

Chipboard with laminate on top, black contra paper on the backside. Monted with a ABS edge. Insert nuts for mounting. Total thickness 23 mm.

Table base:

Profile in extruded aluminum - plates in steel. All powder coated. Glides - Polyethylene (PE).

Colours

Black



TABLE TOP:
Formica F2253

TABLE TOP EDGE BAND:
Rehau 76490

TABLE BASE:
RAL 9005
Gloss 30

Grey

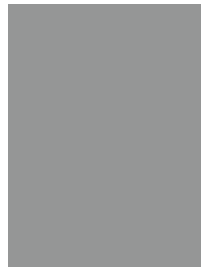


TABLE TOP:
Formica F7961

TABLE TOP EDGE BAND:
Rehau 71352

TABLE BASE:
RAL 7004
Gloss 30

Dark red



TABLE TOP:
Formica F7966

TABLE TOP EDGE BAND:
Rehau 76474

TABLE BASE:
RAL 3004
Gloss 30

Red



TABLE TOP:
Formica F7845

TABLE TOP EDGE BAND:
Rehau 62524

TABLE BASE:
RAL 3020
Gloss 30

Dark blue



TABLE TOP:
Formica F8242

TABLE TOP EDGE BAND:
Rehau 73780

TABLE BASE:
RAL 5008
Gloss 30

Blue



TABLE TOP:
Formica F7851

TABLE TOP EDGE BAND:
Rehau 77283

TABLE BASE:
RAL 5002
Gloss 30

Cream

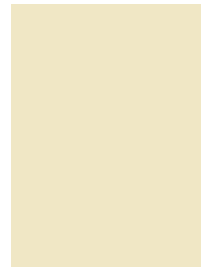
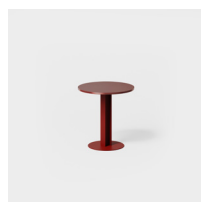
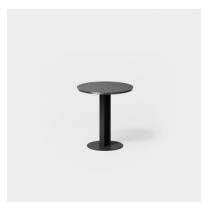


TABLE TOP:
Formica F2273

TABLE TOP EDGE BAND:
Rehau 78162

TABLE BASE:
RAL 1015
Gloss 30



Mix and match

This applies to all indoor HEB Tables - and NOT for the HEB Outdoor tables.

You can choose to have the table in monochrome or you can mix and match the colours, so you have a specific colour for the table base, the edge band and for the table top.

HEB Table Collection — Outdoor



HEB 02 Table Outdoor
Ø700 x H730



HEB 03 Table Outdoor
W600 x D700 x H730

Materials

Table top:
Aluminium with IGP lacquer. Insert nuts for mounting.

Table base:
Profile in extruded aluminum - plates in steel. IGP lacquered. Insert nuts for mounting. Gliders - Polyethylene (PE).

Interview

Multi-coloured sculptures

Launching this May, Krøyer-Sætter-Lassen describes the HEB tables as “multi-coloured sculptures” of economic design, made with extruded upcycled aluminium. It is a sleek and colourful collection of round tables, configurable to any height or diameter, perfect for meetings, dining, or working.

Recycled aluminium

The HEB tables are versatile, self-defining, expressive and suitable for any setting, produced as high and low, small and large units, with extruded industrial HEB beams as their durable base. The tables are charming and grounding, acting as visual as well as social touchstones, with the ultimate purpose of encouraging people to gather around, and between them create a shared world.

For Krøyer-Sætter-Lassen, the idea of redefining bright-coloured beams came from their studio environment. Housed in a tunnel factory in Copenhagen (where parts of the bridge between Denmark and Sweden were made) Krøyer-Sætter-Lassen found beauty in the surrounding red steel structure — a system they were looking to repurpose.

Bringing cleverness back

“The HEB tables are part of an initiative where we are looking at how we can make better use of resources we already have. How can we simplify production by applying industrial strength, and upcycled aluminium? Within their economy, the HEB tables become a way of revealing the potential of design to better operate as a statement, bringing cleverness back into manufacturing for the public realm,” says Martin Halle, creative director at +Halle.

“Taking a recycled industrial product, such as the standard HEB beam, and placing it into a new context makes a lot of sense to us. It’s a bit like French artist and modernist Marcel Duchamp’s, *Fountain*, where you begin to look at an object differently,” says Mads Sætter-Lassen and continues: “We believe that these are lessons that can be applied to furniture today.”

World of table

In contrast to the industrial beam legs, the HEB tabletops come with a matt, tactile, laminate surface wrapped in a glossy abs ribbon, available in seven colours that you can mix and match. This triple combination of materials brings a warm, human, cared-for, and comfortable feeling across the range. “We are looking at three textures either in monochrome or a multi-coloured finish. Today, the base frames come in three colours and the tables come in five, proposed in an array of colour configurations. For us, a combination of blue legs and a red top, for instance, is both playful and expressive,” Emil Krøyer explains.

With its open-ended, flexible reconfiguration and industrial backbone, the HEB is well-designed to serve any social scenario. “The design concept was to make a bold change to the impression of the round table while staying as economical as possible. The result is a landscape, different sizes and heights of round structures, allowing for openness and rigour,” says Krøyer, and Sætter-Lassen continues: “At a sturdy round table, everyone is safely sat in the conversation all at the same time, front-facing, flattening any hierarchy, placing you far from a traditional, and often insecure power structure, of a rectangular table.”

Minimum trace

“Together we tried to do the most with the least, says +Halle, for us, it’s important to incorporate smart industrial methods and products already in use, as opposed to adding to the making of new structures, machinery, and waste. This collection is all about studying how to achieve the maximum effect with what is already there,” says Halle.

“When you look at the hierarchy of furniture the table is always secondary, if you want something to speak to you, it’s going to be the chairs, and your table rarely makes any noise, which is why we think HEB provides a new definition, a humble yet contemporary take on a table,” Sætter-Lassen concludes.

No time to waste

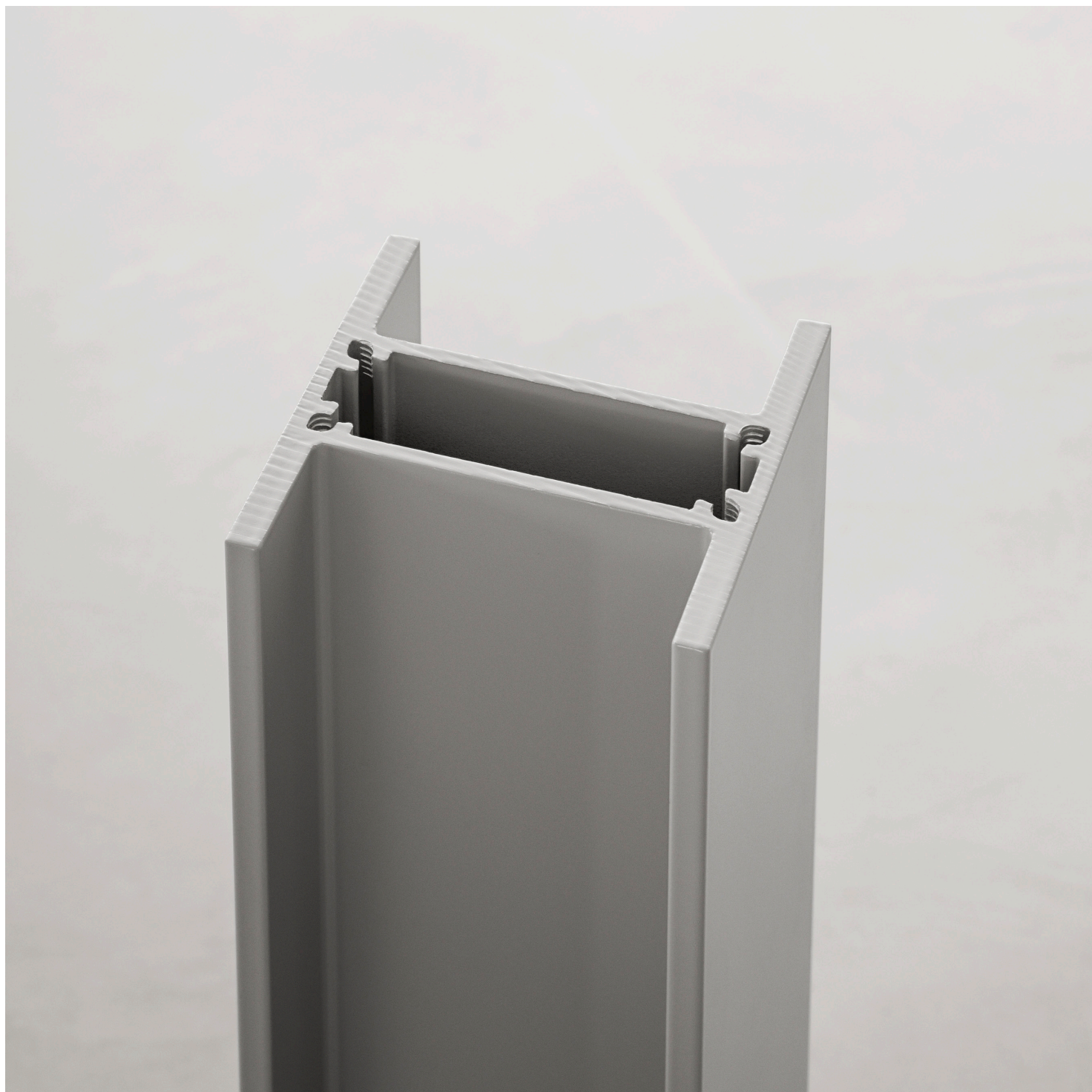
The HEB tables serve as an example of sourcing industrial materials to make new furniture at a scale. It is a clever set-up, recycled and extruded in Denmark, without looking raw or unfinished. “The climate crisis, the cost of production and the pandemic have taught us that the most important thing for design in the future is flexibility, economy and expression, that is what Krøyer-Sætter-Lassen has resolved,” Martin Halle ends.

About Krøyer-Sætter-Lassen

When it comes to breathing industrial cleverness into everyday objects, the Copenhagen-based Design duo belongs to a new generation of Danish designers who are not afraid to include resourcefulness into their game.

While Emil Krøyer and Mads Sætter-Lassen have spent the last decade incorporating great material solutions, it is through a cross-disciplinary approach, that the duo continues to impress, combining economy with lush cabinetmaking, functional metalware, and thoughtful ergonomics.

—→ Learn more about the HEB Table Collection and download assets
<https://plushalle.com/>



+Halle A/S
Europa Plads 16, 3rd DK-8000 Aarhus C
+45 70 26 66 04
info@plushalle.dk

www.plushalle.com

+Halle[®]